

# GRCC RECYCLING GUIDE

## LANDFILL



### NOT SURE? THROW IT OUT

- Anything Stringy Like Cords, Cables, Hoses or Clothing
- Food
- Laminated Paper/Photos/Stickers
- Napkins/Toweling
- Plastic Gloves
- Plastic Wrap/Sandwich Bags
- Straws/Single Use Plastic Utensils

## RECYCLE



### CLEAN AND EMPTY

- Aluminum Foil
  - Glass Bottles and Jars
  - Milk, Juice and Soup Cartons
  - Plastics #1-7, Plastic Bottles, Cups and Containers (LEAVE CAPS ON)
  - Steel and Aluminum Bottles and Cans
- NO FOAM**  
**NO PLASTIC BAGS**

## PAPER



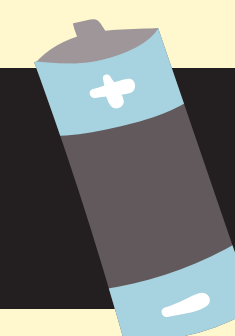
### CLEAN AND EMPTY

- Clean Pizza Boxes
  - Cold and Hot Paper Cups
  - Flattened Cardboard
  - Junk Mail and Office Paper
  - Newspapers and Magazines
  - Paper Boxes and Containers
- NO SHREDDED PAPER**

**WONDER IF AN ITEM IS RECYCLABLE?**  
**WHEN IN DOUBT, THROW IT OUT.**

### DO NOT RECYCLE:

- Anything Stringy Like Cords, Cables, Hoses or Clothing
- Ceramics
- Hazardous Materials
- Medical Waste
- Propane Tanks
- Scrap Metal
- Windows



Look for black battery recycle containers around campus.